

Trees for Climate 2022-2023

Impact and achievements

England's
Community
Forests



Launched in November 2020, Trees for Climate is a multi-million pound woodland creation programme, part of the national Government-led Nature for Climate Fund. Trees for Climate is being delivered by England's Community Forests, a partnership of organisations across the country which have been transforming the landscapes and communities in and around our largest towns and cities for over thirty years.

Trees for Climate plays a significant part in national Government's commitment to address climate change and carbon mitigation through the planting of millions of trees. However Trees for Climate is also bringing about much wider social, economic and environmental transformation across the country.

Trees for Climate has made great progress over the first three years of the programme, making a positive impact for the communities that we support. The success of the programme is thanks to the partnership approach we take working alongside communities, landowners, Forestry Commission and Natural England colleagues, plus the ongoing support from Defra. We'd like to thank all our partners for making the programme the success it is.





Trees for Climate is committed to:

- Mitigating carbon through tree planting, and making a significant contribution to net zero
- Improving climate resilience, by supporting natural flood management, providing shade and reducing the heat island effect
- Improving water and air quality
- Supporting increased public access to woodland, especially for those in areas of greatest need
- Enhancing habitats for wildlife and biodiversity
- Increasing opportunities for community engagement, supporting better levels of health and wellbeing, especially in areas of greatest health inequality
- Taking innovative approaches and delivery practices, and sharing learning to advance the whole sector
- Supporting employment and skills development (including aiding a reduction in reoffending through targeted schemes)

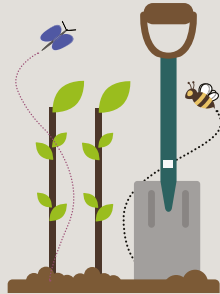
Trees for Climate represents one of the most significant joint programmes of delivery across the England Community Forest network since the first Community Forests were launched three decades ago. Trees for Climate is part of a wider commitment that has been developed through Defra's England Trees Action plan, which sets out a road map to treble tree planting in England by 2024.

The investment through Trees for Climate is building capacity across all of the Community Forests, and will allow additional resources (via Cheshire West and Chester Council - the accountable body for the programme - and Community Forest Trust - the national charity for Community Forestry) to support good programme management and development.

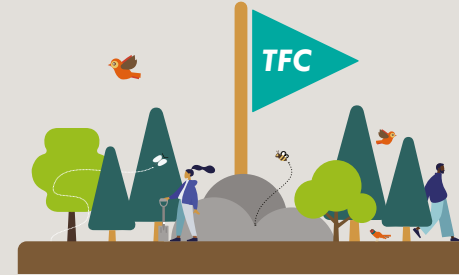
Recent research by Liverpool John Moores University measuring natural capital assets and evaluation of biodiversity benefit shows that for every £1 of investment made in year 3 of the Trees for Climate programme there is at least £22 of benefits provided.



In the third year of the five year programme, from April 2022 to March 2023, Trees for Climate has made significant achievements.



**1,012 hectares
of trees planted**



**More than 30% of all new
tree planting in England during
2022/23 was done through
Trees for Climate**



**68% of woodlands planted
in year three have full or
partial public access**



**32% of year three schemes
are within the most deprived
areas of the country**



The types of woodland creation which Trees for Climate supports



Multi-use
woodland (>5 ha)



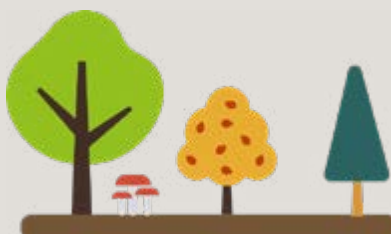
Low density tree planting



Small scale tree
planting (0.5-4.99 ha)



Hedgerows



Very small scale tree
planting (0.1-0.49 ha)



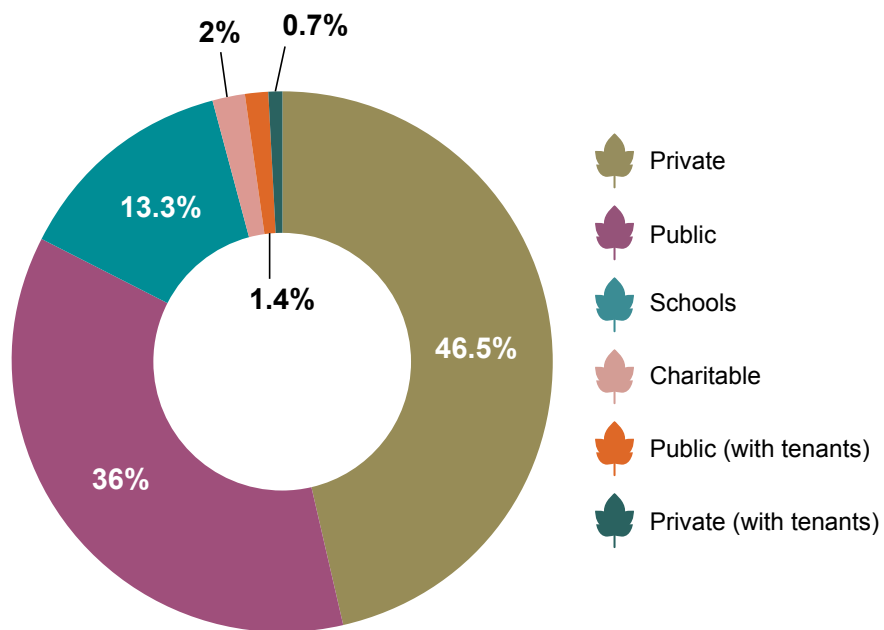
Natural colonisation



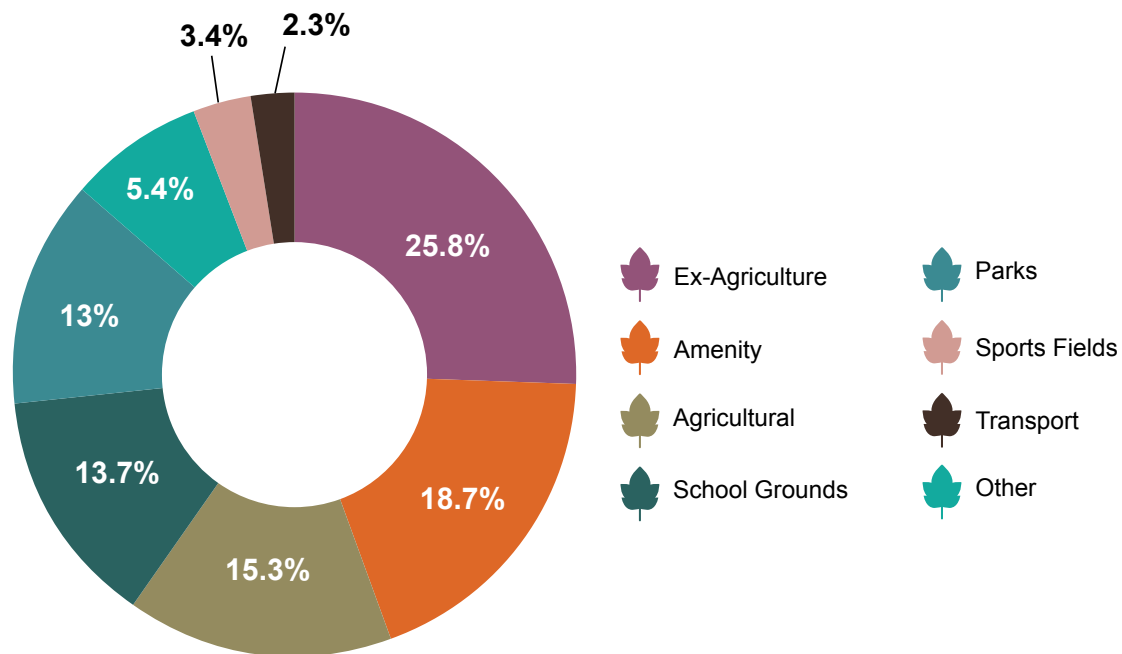
Location of year three Trees for Climate sites by Community Forest



Land ownership Year three



Breakdown of tree planting schemes by type of land



Natural Flood Management and Water Quality



572ha

of catchment land
has been improved
through the Trees
for Climate
programme in
year three.

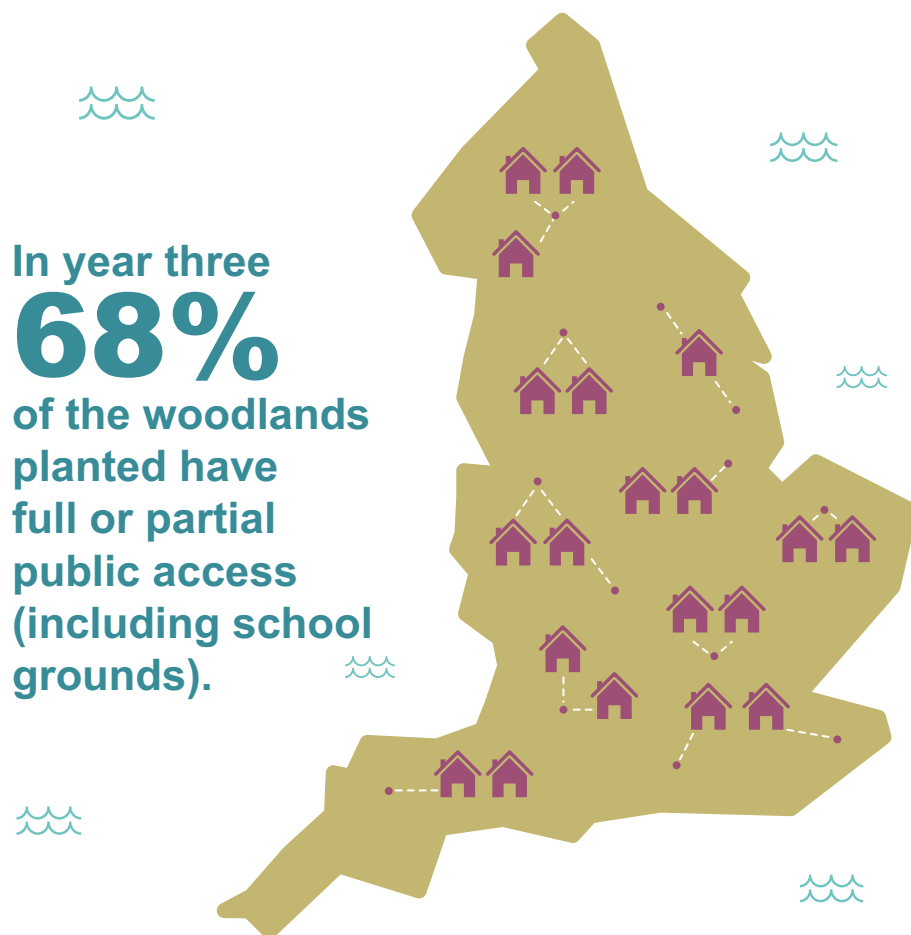
£

The value of additional
water storage on these
sites is estimated at
£118,969 per annum.



Public access and value

Community Forests exist where the need is greatest; more trees and accessible woodlands contribute to healthier, more liveable and more economically rewarding places.



Over 500,000 more people across the country are now within 500m of a woodland thanks to Trees for Climate delivery



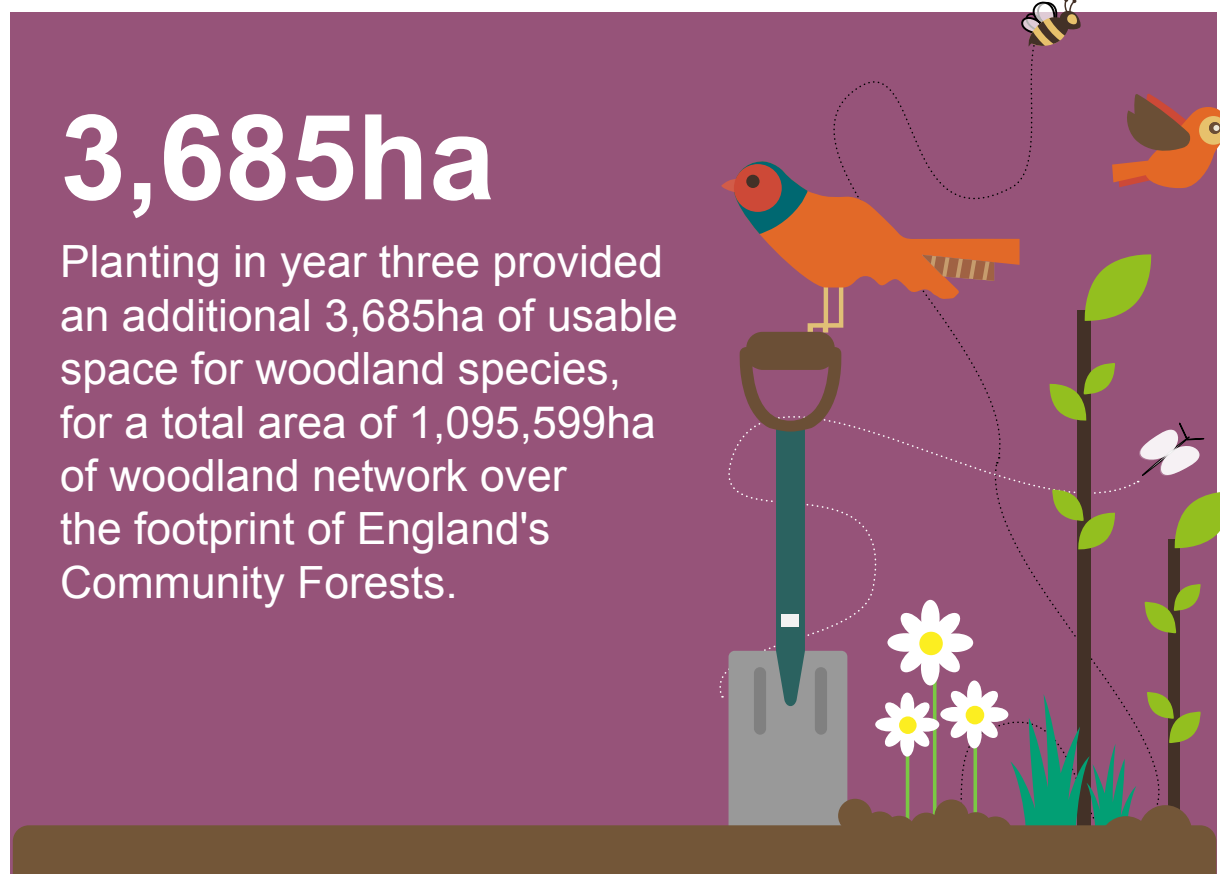
Once established the woodlands created could generate over 4.2 million annual visits with an estimated total value of £12.8 million per year.



Enhancing wildlife

555 new woodland sites delivered in year three were designed to contribute to local ecological framework and nature recovery networks.

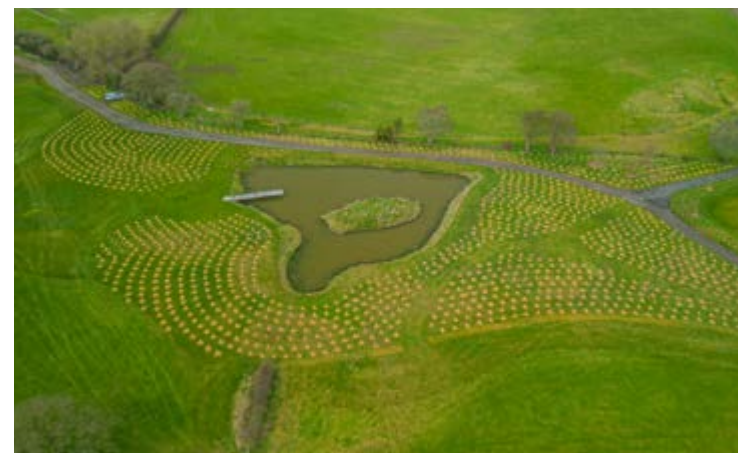
For example:



3,685ha

Planting in year three provided an additional 3,685ha of usable space for woodland species, for a total area of 1,095,599ha of woodland network over the footprint of England's Community Forests.

The illustration depicts a purple background with a brown ground line at the bottom. On the left, a shovel is stuck into the ground. To its right are three white daisies with yellow centers. Further right is a small green plant with two leaves. On the far right, a taller green plant with several leaves is shown. A large orange and blue bird is perched on the shovel's handle. A smaller orange bird is flying in the upper right. A bee is flying in the upper left, and a white butterfly is flying in the middle right. Dotted lines connect the bird, bee, and butterfly to the ground level.



It is estimated that the value of the biodiversity enhancement through the creation of the 555 new woodland sites and linking to nearby woodlands is £692,436 per year.



Contributing to net zero



Engagement, health and wellbeing

13,393 people

In Year three, over 13 thousand members of the community were engaged in tree planting.



Education, employment and skills

Education, employment and skills

Education

13% of the overall Year three projects were with schools, allowing opportunities to support wider working with educational partners through projects such as Forest School and Woodland Outreach which help to connect children to nature. The social return on investment was £7.4m per annum.



Employment and skills

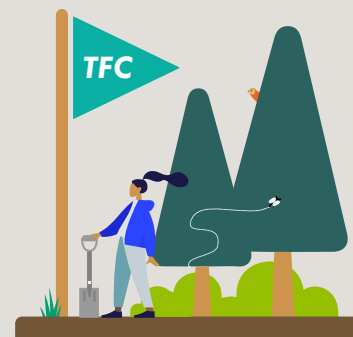
A range of roles are supported through the Trees for Climate programme, including land agents and woodland contractors, and those employed in the tree supply chain. A variety of posts are directly employed (75 in total) to deliver 1,012ha of woodland in year three. Individual Community Forests developed strong links with military veterans' charities, including Walking with the Wounded and the Green Task Force. In City of Trees, 14 Walking with the Wounded members were employed during the planting season as woodland contractors.



Since the start of the programme in 2020, Trees for Climate has made significant achievements..



2,063 hectares of trees planted



26% of all new trees planted in England since 2020 has been done through the Trees for Climate programme



81% of Trees for Climate woods have public access



Three new Community Forests have been created



Looking to the future

Funding through to March 2025 has been confirmed for the Trees for Climate programme and we're already developing plans for England's Community Forests through to 2030 and beyond.

Would you like to know more?

Whether you are a landowner keen to plant trees as part of the Trees for Climate programme, or an organisation eager to establish partnership opportunities with your nearest Community Forest we'd love to hear from you.

englandscommunityforests.org.uk

